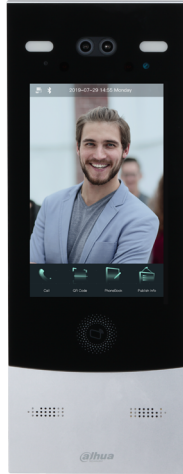


# DHI-VT07521G

## 8 Inch Digital Outdoor Station



- Anodized aluminium alloy middle frame
- 8 inch capacitive touch screen and high definition IPS screen; resolution: 800 (H)×1280 (V)
- Password and card unlock
- Full duplex communication
- Outdoor stations can be managed through the platform; voice communication between mobile app and platform
- 2 MP low illuminance wide dynamic dual camera; white light fill light and IR fill light, fill light brightness can be adjusted
- Support duress alarm, tamper alarm, and fire alarm
- IK07; IP66 (Apply silica gel to gaps between the device and the wall. Liquid sodium silicate is recommended. For details, see the quick start guide.)
- Surface mount and flush mount



### Technical Specification

#### System

Main Processor	Embedded processor
Internet Protocol	IPv4, FTP, DNS, RTSP, RTP, TCP, UDP, SIP
Keyboard Type	Touch keyboard

#### Basic

Appearance	G series
Display	High definition IPS screen
Screen Type	Capacitive touch screen
Resolution	800(H)×1280(V)
Camera	1/2.8" 2MP CMOS
Angle of View	H:88°, V:47°, D:105°
WDR	120dB
Light Compensation	Auto white light fill light Auto IR light fill light
Status Indicator	1, blue-operation status
Voice Prompt	Yes
Housing Material	AL+PC+ABS

### Function

Unlock Mode	Remote/password/card unlock
Online Update	Yes
Full Duplex Communication	Yes
Snapshot When Unlocking Doors	Yes
Leave Photos and Messages	Yes
Web Configuration	Yes
Motion Detection	Video motion detection
Issue Card Locally	Yes
Auto-Registration	Yes

### Performance

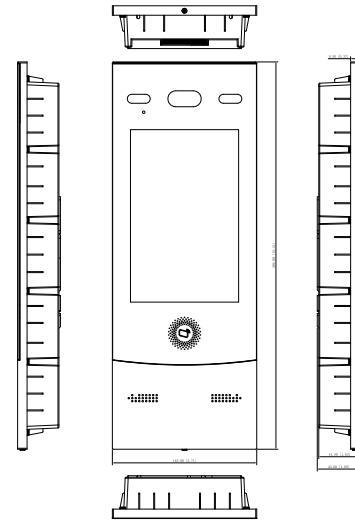
Card Capacity	10, 000
---------------	---------

### Port

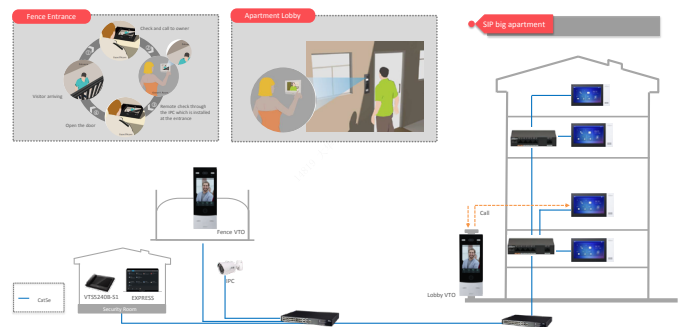
RS-485	1
Wiegand	1
Ethernet	1 10M/100M/1000M Ethernet port
Alarm Output	2 (Dry contact)

Alarm Linkage	Yes
Power Output	1 DC 12V/100ma
Exit Button	1
Door Status Detection	1
Lock Control	1, normally on or off by default
<b>Alarm</b>	
Tamper Alarm	Yes
Duress Alarm	Yes
Door Sensor Timeout	Yes
<b>Regular</b>	
Ingress Protection	IP66 (Apply silica gel to gaps between the device and the wall. Liquid sodium silicate is recommended. For details, see the quick start guide.)
Power Supply	Optional
Power Supply Mode	DC 12V/2A
Power Consumption	≤24.0W
Product Dimensions	389mm×145mm×43mm (15.31"×5.71"×1.69")
Packaging Dimensions	413mm×182mm×104mm (16.26"×7.17"×4.09")
Operating Temperature	-20°C to +60°C (-4°F to + 140°F)
Operating Humidity	10%RH–90%RH
Operating Altitude	86kPa to 106kPa
Gross Weight	1.91kg(4.21 lb)
Accessory	Mount plate
Installation Method	Surface mount and flush mount
Operating Environment	Outdoor

**Dimensions (mm[inch])**



**Application**



**Ordering Information**

Type	Model	Description
Outdoor Station	DHI-VT07521G	8 Inch Digital Outdoor Station VT075X1G
Surface Mount Plate	VTM120	Installation plate for 8 inch Digital Face Recognition Outdoor Station VT075X1G (Used when the outdoor station is installed on the wall)
Flush Mount Plate	VTM121	Installation plate for 8 inch Digital Face Recognition Outdoor Station VT075X1G (Used when the outdoor station is installed in the wall)